

## **Historic, Archive Document**

Do not assume content reflects current scientific knowledge, policies, or practices.





Courtesy Portland Rose Nursery

SEC. 562 U.S. & F.



*Oak Knoll  
Garden Center*

OAKLAND 5, CALIFORNIA  
7950 MOUNTAIN BLVD.  
TELEPHONE LOCKHAYEN 8 0511



## RHODODENDRONS

U. S. DEPARTMENT OF AGRICULTURE  
LIBRARY  
WASHINGTON 25, D. C.

PENALTY FOR PRIVATE USE TO AVOID  
PAYMENT OF POSTAGE, \$300

GPO

OFFICIAL BUSINESS  
PRINTED MATTER

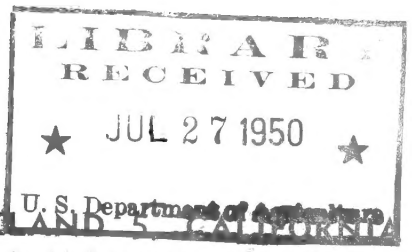
Library, U. S. Dept. of Agriculture,  
WASHINGTON 25, D. C.



62,07



# Oak Knoll Garden Center



U. S. Department of Agriculture  
OAKLAND 5, CALIFORNIA  
7950 MOUNTAIN BLVD.  
TELEPHONE: LOCKHAVEN 8-0511

America's Finest

## RHODODENDRON

Hybrids

### RHODODENDRON CULTURE

**SOIL:** Generally speaking, Rhododendrons require an acid soil that is well drained. A generous application of peat or well decayed leaves scattered on the bed before spading will provide a friable compost for the hair-like roots and also assist in keeping the soil acid.

**PLANTING:** Rhododendrons are essentially surface rooters, therefore, plant them so that the top of the root ball is barely one inch below the soil level. We feel safe in saying that 90% of the cultural difficulties encountered are directly traceable to deep planting.

Dig a hole several inches in excess of the ball's depth and width, fill in around the ball with equal parts of peat and loam, tamp with a shovel handle to prevent undue settling and water thoroughly. In a heavy clay, we advise that the soil be removed to at least twice the diameter of the ball's width and replaced with a silty loam. **Planting** may be carried out between the months of September and April, but we strongly recommend that this operation be performed in the fall so that the plant has a chance to become established before the summer months.



BEAUTY OF LITTLEWORTH

MRS. G. W. LEAK

LANGLEY PARK

**MULCHING:** After planting, mulch with two or three inches of peat, decayed leaves, or dried fern. This mulch has a three-fold purpose. 1) It protects the roots from drying out. 2) It helps conserve moisture. 3) It ultimately becomes a source of food available to the surface feeding roots. On well established specimens, a top dressing of decayed cow manure, applied before the fall rains, will be found beneficial.

**WATERING:** The progenitors of most Rhododendron hybrids are native to regions where the humidity is relatively high so that during warm summers days the plants appreciate overhead sprinkling night and morning to reduce the evaporation rate on leaf surfaces. They imbibe water in quantity during the growing season, but over-watering is disastrous if the soil has been insufficiently lightened and water accumulates about

the root system. The question of adequate drainage cannot be too strongly emphasized. A minimum of water is required during the dormant period which occurs in late fall.

**SHELTER:** Partial shade and protection from cutting winds is essential. Good shade trees include the following, pines, oaks, larch, larger magnolias and the flowering fruit trees. Dense overhead shade is not to be recommended because a certain amount of sunlight is necessary to "ripen" the wood in order that flower buds may be formed and also to prevent the plant from becoming leggy and drawn.

**AFTER FLOWERING:** Remove all faded blooms from the plants to prevent the formation of seed pods. This will conserve the plant's strength and help promote sturdy new growth.

COMPARATIVELY SPEAKING RHODODENDRONS ARE EASY SUBJECTS TO GROW SUCCESSFULLY, PROVIDED THE ABOVE SIMPLE INSTRUCTIONS ARE FOLLOWED. We maintain that if they are planted correctly in the beginning, they will require very little future attention.

BETTY WORMALD





# America's Finest RHODODENDRON Hybrids



J. H. VAN NES

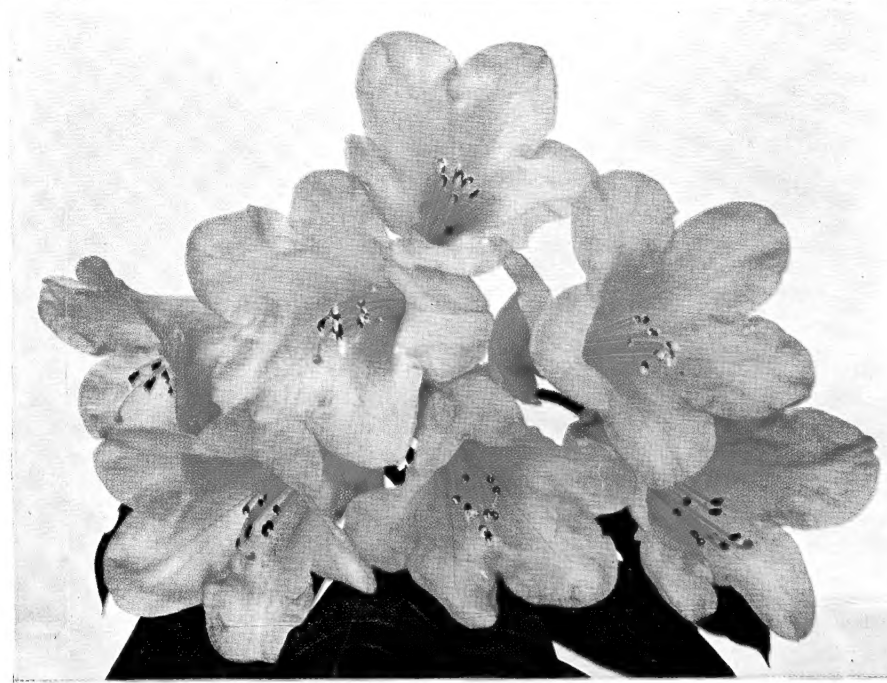
- ANTON VAN WILIE (B)** Very large flowered deep pink, habit similar to Pink Pearl, midseason bloom.
- AZMA (Griersonianum x Fortunei)** Graceful trusses of trumpet shaped blossoms reminiscent of Griersonianum, but with larger flowers and an unusual shade of pink. Special Merit Award at the Oakland Spring Flower show in 1947. Medium habit, late midseason bloom.
- AZOR (B) A. M. (Griersonianum x discolor)** A vigorous grower with very large flowers of soft salmon. Late season blooms.
- BARCLAYI (C) (Thomsonii x Glory of Penjerrick)** Intense crimson trusses of large bell shaped flowers. Early midseason bloom. Tall habit.
- BEAUTY OF LITTLEWORTH (B)** A strong growing Griffithianum hybrid with handsome foliage and large conical trusses of white flowers which are speckled with dull crimson on the upper petals. Tall habit. Early midseason bloom.
- BETTY WORMALD (B) A. M.** A superior Pink Pearl, blooming a week later with a large truss of pink flowers and a pale purple blotch on the upper petal. Midseason bloom. Medium tall habit.
- BLUE PETER (A)** One of the best hybrids in this color range. The flowers are large pale lavender blue with a deep blotch. Very good foliage. Named after a British Naval flag which is used to signify that the vessel is ready to leave port.
- BLUE TIT (B) (impeditum x Augustinii)** An outstanding dwarf compact hybrid for the rock garden or front of the border. Very floriferous, flowers a pleasing shade of light blue. Early midseason bloom.
- BOWBELLS (B) A. M. 1935. (Corona x Williamsianum)** A delightful dwarf compact hybrid for the front of the border. Graceful bright pink flowers. Midseason bloom.
- BROUGHTONII AUREUM (C) F. C. C.** An Azaleodendron of great merit. The bushy plants produce an abundance of rounded trusses which have yellow flowers with darker blotches on the upper petals. Medium bushy habit. Midseason bloom.
- BULSTRODE PARK (B)** Large trusses of deep red waxy flowers. Handsome foliage. Midseason bloom. Upright growth.
- BUTTERFLY (B) A. M.** Pale lemon yellow flowers with large chocolate blotch on upper petals. Neat truss. Midseason bloom. Medium habit.
- CANARY (B)** A neat growing variety with bright yellow bells. Midseason bloom. Low and compact habit.
- C. B. VAN NES (B)** A splendid variety. Dark scarlet trusses of waxy flowers. Erect habit and good drainage. Midseason bloom.

UNKNOWN WARRIOR



- CILPINENSE (B) A. M. (giliatum x moupinense)** A small compact dwarf hybrid with large quantities of soft pinkish white flowers. Early season blooms.
- CORNISH CROSS (C) (Thomsonii x Griffithianum)** A magnificent hybrid with handsome rounded leaves. The large bell shaped flowers, borne in huge trusses, open a brilliant crimson and gradually fade to a rich deep pink. Blooms in late April and is a tall grower.
- CORONA (B)** Compact well formed tall trusses of deep coral pink flowers. Midseason bloom. Medium compact habit.
- DAIRYMAID (B) A. M.** Possibly a campylocarpum hybrid. Neat bushy habit with lemon yellow flowers flushed pink.
- DAWN'S DELIGHT (B)** A Griffithianum hybrid with rich carmine buds opening to a beautiful soft pink. Late midseason bloom. Medium habit.
- DAY DREAM (Lady Bessborough x Griersonianum)** Rueth's form. A compact spreading plant with an abundance of orange scarlet blossoms in late May. Very fine.
- DIANE F. C. C. in 1948 (campylocarpum x Mrs. Lindsay Smith)** Combines the color of campylocarpum with the size of Mrs. Lindsay Smith to produce individually large flowers that are pale yellow. Medium habit, blooms in May.
- DIDO (B) (decorum x dichroanthum)** Considered in England the nearest approach to orange in color. Compact bushy habit, blooms in May.
- DR. O. BLOK (B)** Vigorous growing Griffithianum hybrid with a large conical truss. The individual flowers are very large, pale pink, with darker edges. Late bloom. Medium habit.
- DR. STOCKER (B) (caucasicum x Griffithianum)** Large ivory white flowers with a few dull crimson markings at the base. Good foliage. Early bloom. Medium habit.
- EARL OF ATHLONE (B)** One of the finest blood red hybrids. The well formed trusses are of good substance and do not fade. Highly recommended. Early midseason bloom. Tall habit. Has received many awards at flower shows.
- ELSPETH (B) A. M.** A fine compact truss. The flowers at first are scarlet opening to rich apricot. Early midseason bloom. Compact bushy habit.
- FABIA (B) (dichroanthum x Griersonianum)** A vigorous grower with numerous trusses of orange salmon bells. Late blooming season. Low compact habit.
- FAGGETTER'S FAVORITE (B)** A Griffithianum hybrid. Large handsome trusses of bluish pink blossoms. Strong grower and makes a pleasing combination when planted with the Loderi varieties. Medium tall habit.

FABIA



- F. C. PUDDLE A. M. (neriiflorum x Griersonianum)** Lord Aberconway considers this to be one of his finest red hybrids and named it after his good friend. A very compact growing orange red which has taken many awards at the R. H. S. shows in England.
- GARNET (B) A. M. (Broughtonii x Griffithianum)** Well formed trusses of clear salmon pink flowers. Medium height. Midseason bloom.
- GILL'S CRIMSON (B)** A Griffithianum hybrid with dark blood red waxy flowers. Early flowering. Medium tall habit.
- HUGH KOSTER (B)** A greatly improved Doncaster with bright crimson trusses. Medium compact habit. Midseason bloom.
- IVERY'S SCARLET (C)** A fast growing variety with blood red flowers in midseason.
- J. H. VAN NES (B)** A pleasing shade of soft red. Flowers in late midseason. Medium compact habit.
- JEAN MARIE DE MONTAGU (B)** A Dutch hybrid with very good dark green foliage and rounded trusses of bright crimson flowers. Late midseason bloom. Medium sturdy habit.
- LADY BLIGH (B)** Built up trusses of large strawberry red flowers which fade to a very rich pink. Midseason bloom. Compact habit. Very good.
- LADY PRIMROSE (B)** Neat trusses of lemon yellow flowers with interiors spotted red. Midseason bloom. Medium compact.
- LADY STUART OF WORTLEY (B)** Very large rich pink flowers in tall trusses. Midseason bloom. Tall habit.
- LANGLEY PARK (B)** An attractive plant with shapely trusses of deep glowing, red waxy flowers. Midseason bloom. Medium habit.
- LODERI (C) (Griffithianum x Fortunei)** The entire Loderi group include the most outstanding hybrids in cultivation. The flowers are all very large, measuring six to seven inches in diameter on established plants, and are scented. This variety opens shell pink, fading to white and the flowers are ruffled at the edges. Midseason bloom. Tall spreading habit.
- LODERI KING GEORGE (C)** A form of Loderi with giant trusses of ivory white blossoms.
- LODERI SUPERLATIVE** Same as above but with the interior of the flowers flushed pale yellow.
- LODERI VENUS** Same as above but with shell pink flowers.
- LODER'S WHITE (B)** The best white rhododendron in cultivation for all purpose planting. The truss is well formed and the individual flowers are very large, frilled, opening with a tinge of pink and fading to pure silvery white. Early midseason bloom. Medium spreading habit.

MRS. C. B. VAN NES



- MADAME FR. J. CHAUVIN (B)** Rosy pink flowers with a deep blotch on a paler center. Well formed truss. Midseason bloom. Medium tall habit.
- MARINUS KOSTER (B) A. M.** A strong growing Dutch hybrid with good foliage and large trusses of deep pink flowers with a brown blotch.
- MARS (B) F. C. C.** Tight trusses of deep true red flowers. Late midseason bloom. Medium compact habit. The truss has from 16 to 22 flowers.
- MAY DAY (C) A. M. (haematodes x Griersonianum)** Medium compact, spreading habit of growth. Scarlet bell shaped flowers in May. Highly recommended.
- MOTHER OF PEARL (B)** Large Pink Pearl type truss. Flowers opening pale bluish and turning to pure white. Medium tall habit. Midseason bloom.
- MRS. A. T. DE LA MARE (B)** Enormous trusses of white flowers with a green spot on the upper petal. Strong grower. Good foliage. Midseason bloom. Tall habit.
- MRS. C. B. VAN NES (B)** A beautiful shade of deep pink. Blooming in early May and very much admired at the rhododendron shows in Portland and Seattle. Medium habit.
- MRS. CHAS. PEARSON (B) A. M. in 1935.** Immense flowers of bluish mauve spotted burnt sienna. Very good dark green foliage. Blooms in May.
- MRS. E. C. STERLING (B)** A Griffithianum hybrid of good habit. Flowers a pleasing bluish pink shading to lilac, very tight conical truss. Midseason bloom.
- MRS. FURNIVAL (B)** An exceptional hybrid. The striking flowers are clear light pink with a sienna blotch. Holds its large dark green foliage well. Late midseason bloom. For a succession of bloom plant with Mrs. G. W. Leak. Compact medium habit.
- MRS. G. W. LEAK (B)** Shapely trusses of pink flowers with brown purple blotch in upper petal. Early midseason bloom and taller growing than Mrs. Furnival.
- MRS. LINDSAY SMITH (B)** Vigorous grower with large trusses of white flowers in June. The individual blooms are large. Rated in England as second only to Loder's White for all purpose planting. Tall habit.
- MRS. MARY ASHLEY (B)** A lovely shade of salmon pink over cream. Midseason bloom and medium habit.
- MRS. PHILIP MARTINEAU (B) F. C. C.** A most attractive rhododendron. Tall trusses of rose pink flowers with a pale yellow blotch in the upper petal. Midseason bloom, medium habit.

## PLEASE NOTE

### SYMBOLS:

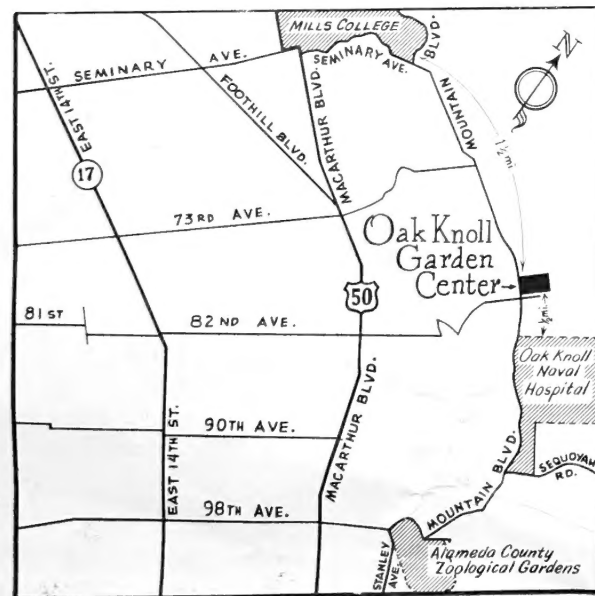
- F. C. C.—First Class Certificate awarded by the Royal Horticultural Society.
- A.M.—Award of Merit awarded by the Royal Horticultural Society.
- R—Rockery.

- \* English  
 \*\* Quality Rating  
 \*\*\*  
 \*\*\*\*

## TERMS OF SALE

Net Cash.  
 Prices F.O.B. Our Nursery.  
 There will be no charges for packing materials.

The OAK KNOLL GARDEN CENTER is located at 7950 Mountain Blvd. 1/2 mile west of Oak Knoll Naval Hospital and 1 1/2 miles east of Mills College.



## RHODODENDRON HYBRIDS CONTINUED

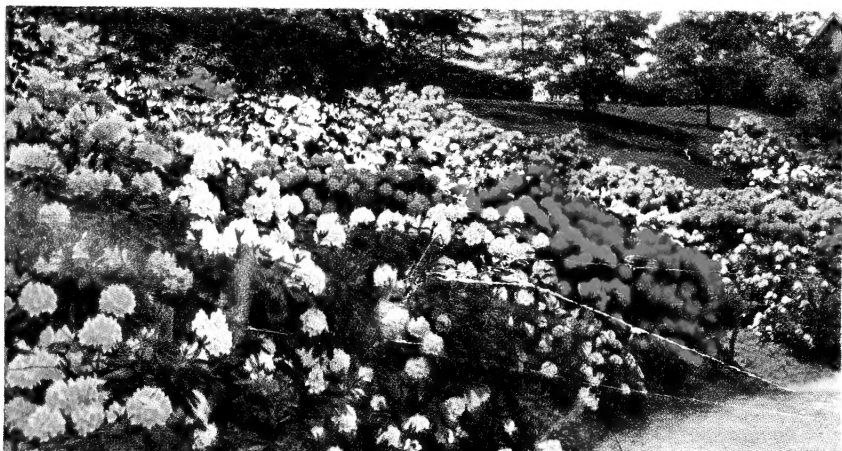
\*\*\* MRS. W. C. SLOCOCK (B) A neat compact campylocarpum hybrid. The flowers are a rich apricot pink shading to yellow. Midseason bloom.

\*\*\*\*PENJERRICK (C) (campylocarpum x Griffithianum) Loose trusses of large bell shaped creamy yellow flowers. Considered in England to be one of the best hybrids yet created. Midseason bloom.



LADY  
STUART  
OF WORTLEY

*The RHODODENDRON PLANTING in  
YOUR GARDEN . . . The annual delight of a lifetime*



\*\* PILGRIM (B) A. M. 1926 (Fortunei x Gill's Triumph) Individually large flowers of soft pink. Midseason bloom.

\*\*\* PURPLE SPLENDOR (A) The finest purple in cultivation. The flowers are a rich deep royal purple. Late midseason bloom. Medium habit.

\*\*\* PYGMALION (B) A striking variety with well shaped trusses of crimson scarlet flowers heavily spotted black on the upper petals. Late midseason bloom. Medium spreading habit.

\*\*\* ROMANY CHAI (B) A. M. in 1932 (Moser's Maroon x Griersonianum) Another of the late Lionel de Rothschild's hybrids. The flowers are a large deep velvety scarlet. Late to late midseason bloom. Medium habit.

\*\* SCANDINAVIA (B) Large crimson scarlet trusses. Strong compact grower. Late midseason blooms.

\*\*\* SNOW QUEEN (C) A. M. A vigorous growing hybrid with trumpet shaped pure white flowers. Midseason bloom. Tall habit and must be planted in considerable shade.

\*\*\* SOUV. OF W. C. SLOCOCK (B) A. M. A very neat growing compact hybrid with compact trusses of primrose yellow flowers which are pink in bud. Midseason blooms.

\*\*\* SUSAN (A) A campanulatum hybrid and the nearest to blue in large flowered hybrids. Graceful habit of growth with rounded trusses of lavender blue flowers. Early midseason bloom.

\*\*\*\*TALLY HO (C) F. C. C. (Griersonianum x eriogynum) This outstanding hybrid is well worth a place in every collection. The flowers are a bright hunting coat scarlet. Bushy habit and blooms in June.

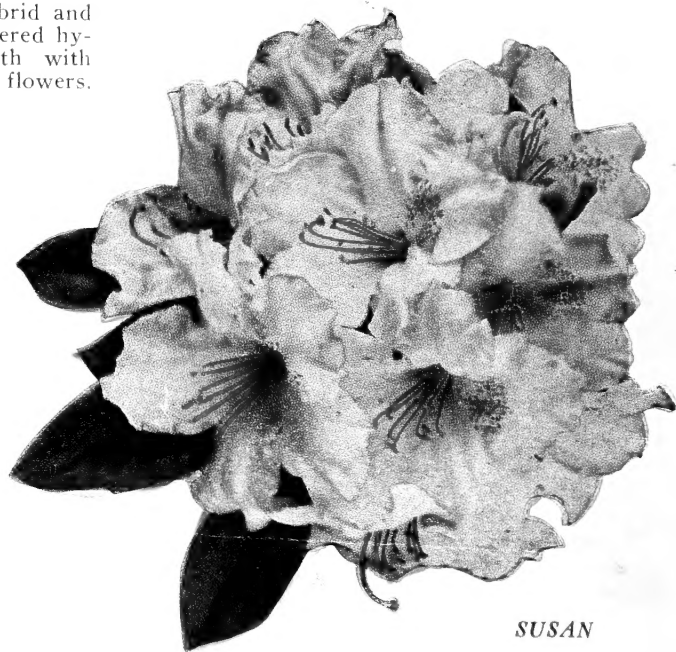
\*\*\*\*UNIQUE (B) F. C. C. A very compact growing hybrid with neat trusses of waxy pale yellow flowers. Early midseason bloom.

\*\* UNKNOWN WARRIOR (B) Good shaped trusses of bright red flowers. Vigorous grower. Early season bloom. Medium spreading habit.

VAN NES SENSATION (C) Enormous trusses of pale lilac flowers. Handsome foliage and strong grower. Midseason bloom. Medium tall habit. Very much admired at the 1948 Rhododendron show in Portland.

\*\* VULCAN (B) (Mars x Griersonianum) A very floriferous hybrid with bright red flowers. Special Merit Award at the 1948 Oakland Spring Flower Show.

\*\*\* ZUIDER ZEE (B) A. M. A compact upright yellow variety. Midseason bloom.



SUSAN